



Gator

Irri-Gator 5000 System

PC Based Irrigation Control System

The **Irri-Gator 5000** PC based control system makes use of a dedicated standard personal computer pre-loaded with specialized irrigation control software. The PC is interfaced to a Gator wireless irrigation control unit allowing system outputs such as pumps, filters, valves, etc. to be activated using a wireless signal.

The system presently operates on a time basis only however future development will allow for back indication from various metering devices such as water meters, fertilizer meters and numerous other inputs. The Irri-Gator 5000 system is ideal for small to medium farms as well as sport and commercial landscape applications.

Main Features

- Unlimited number of irrigation systems per Personal Computer
- Up to 100 irrigation valves per system
- Up to 4 irrigation pumps per system
- Unlimited number of irrigation sequences per system
- Up to 20 irrigation cycles per irrigation sequence
- Unlimited number of valves per irrigation cycle
- Colour coded user friendly irrigation status screen



General Overview

How The System Works

The irrigation program (software) is loaded on to a dedicated PC. The irrigation software program is setup to control all outputs such as pumps, main valves and irrigation valves using a wireless signal.

The PC is linked to a transmitter interface card via the PC's RS232 serial port. The transmitter interface card converts the data into a protocol that is understood by the radio equipment. This data is injected into a standard mobile radio set which transmits a series of codes over the air. The maximum number of outputs the radio system can control is 256 and the estimated range is ± 2.5 Km omnidirectional.

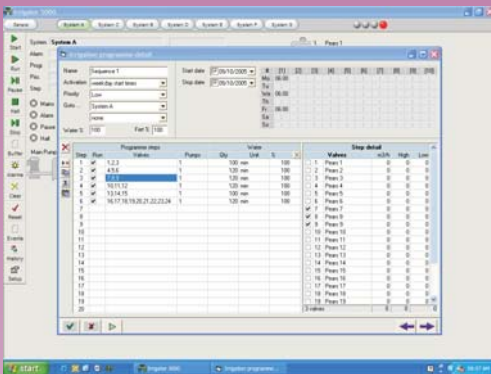
A small battery operated G3 receiver module capable of controlling a minimum of one and up to four valves or relays is located at the position of the valve/s and or pump/s to be controlled within the irrigation system. Each receiver module is set with its own unique address and will only switch "on" or "off" if this address is detected in the airwaves.

The systems operator can pre-program the required irrigation sequences and activate these on an automatic basis using days of the week or a cyclic starts. The systems irrigation status can be monitored at any given time.

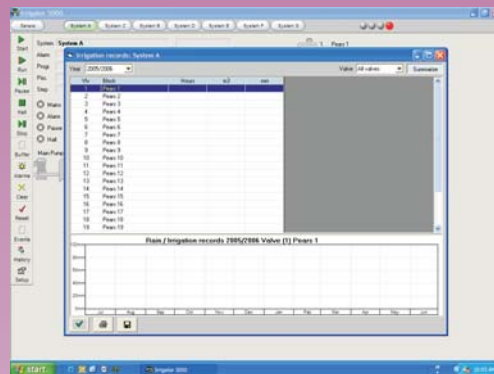
Full irrigation history for each irrigation valve / block within each system is stored on the PC hard drive allowing the user to view or print irrigation logs.

Devices such as pressure switches, flow switches and mains relays can be hooked up to the system to provide a certain level of system safety. The software can be setup to trigger alarm events if these devices are set off.

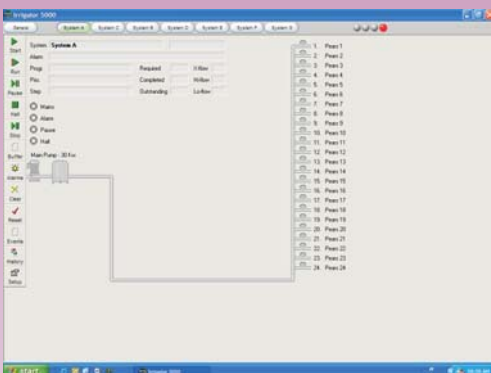
Software Screen Shots



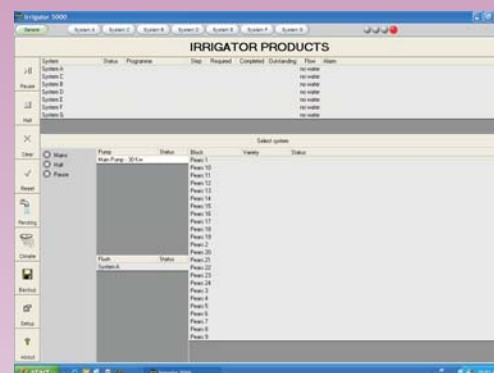
Sequence Programming



Irrigation History



System Status



General Status

For sales or technical support, please contact:

IRRI-GATOR Products (Pty) Ltd

Mail: P. O. Box 889
Brackenfell, 7561
Western Cape
South Africa

Tel: +27 21 9827561
Fax: +27 21 9814473
e-mail: info@irrigator.co.za
www.irrigator.co.za

For more information contact your local dealer:

